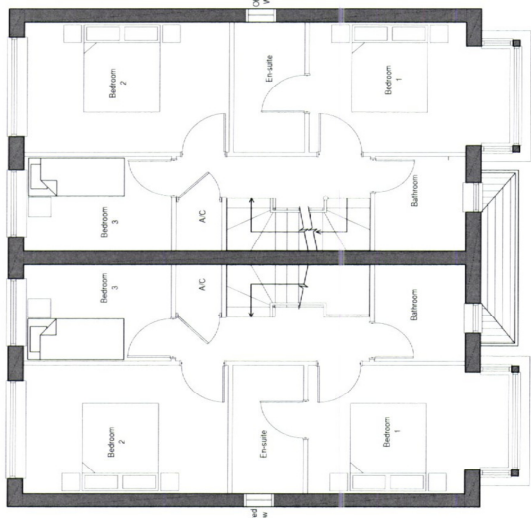


**GROUND FLOOR**

House A  
FLOOR GIA 47.7 m<sup>2</sup>

House B  
FLOOR GIA 47.7 m<sup>2</sup>

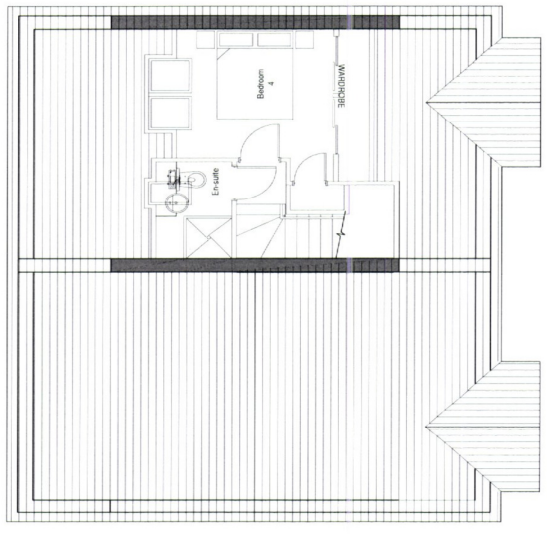
TOTAL GIA House A: 95.4 m<sup>2</sup>  
TOTAL GIA House B: 110.3 m<sup>2</sup>



**FIRST FLOOR**

House A  
FLOOR GIA 47.7 m<sup>2</sup>

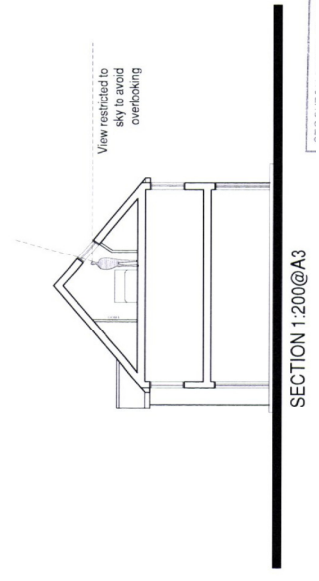
House B  
FLOOR GIA 47.7 m<sup>2</sup>



**SECOND FLOOR**

House A  
FLOOR GIA 47.7 m<sup>2</sup>

House B  
FLOOR GIA 47.7 m<sup>2</sup>



Residential development comprising the erection of four houses and the creation of five flats plus associated parking at the Layfield Arms, Davenport Road, Yarm